



Broken By Design Special Edition Newsletter

WHO WE ARE: The DePaul Migration Collaborative engages scholars, practitioners, students and alumni to find solutions to society's most pressing problems in the areas of migration, mobility and human rights.

Event Details

Date: May 1st, 2024
Time: 8:30 am to 5 pm

Event Details and Registration: [HERE](#)

Parking: DePaul does not provide parking at the loop campus. Please keep this in mind for your commute.

Virtual Participation: The zoom link will be sent out on April 30th to those who are registered for zoom participation via eventbrite. Be sure to check spam if necessary. **If you need to register for zoom, you may do so via eventbrite by 4/30.**

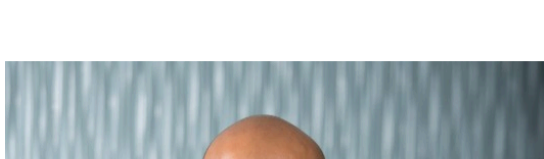
MCLE and other Materials: Guests can complete the MCLE evaluations after each session via the virtual form or the physical form at the symposium.

Access MCLE Materials: [Broken by Design: Refuge and Responsibility](#)

MCLE Virtual Evaluation: [IL MCLE Evaluations Form, DMC 2026 Symposium – Fill out form](#)

Opening Plenary: Mass Deportation as Racial Engineering with Ahilan Arulanatham (MCLE)

Just days after presenting his closing oral argument before the Supreme Court, Ahilan Arulanatham will join the DePaul Migration Collaborative for a timely conversation on Temporary Protected Status (TPS) litigation. Ahilan Arulanatham is the Co-Director of the Center for Immigration Law and Policy at UCLA School of Law. In the past, he has litigated cases in relation to Due Process, deportation, legal counsel and more.



At the center of this landmark case is whether the administration has the authority to evict TPS for Haitian immigrants—a decision that could reshape the future of TPS more broadly.

In his talk, *Mass Deportation as Racial Engineering*, Arulanatham will share insights from his recent Supreme Court experience and situate the case within the longer history of racial discrimination in U.S. humanitarian admissions policy.

Some Relevant Readings

[Temporary Protected Status and the Supreme Court: an explainer | SCOTUSblog](#)

[Temporary Protected Status \(TPS\): An Overview - American Immigration Council](#)

[House passes bill extending protections for Haitians in U.S. - NPR](#)

[Trump canceled temporary legal status for more than 1.5 million immigrants in 2025 | WLRN](#)

[Reversing Racist Precedent by Ahilan Arulanatham - SSRN](#)

Morning Breakouts



Undermining Justice: Attacks on the Rule of Law (MCLE)

This panel brings together former immigration judges to share firsthand experiences and insights into the systemic pressures facing the immigration judiciary, discussing how political interference, court backlog, and the erosion of due process threaten the rule of law. Panelists will highlight the real-world consequences for migrants, legal practitioners, and the broader justice system, offering an urgent call to safeguard judicial independence.

Some Relevant Readings

[How Trump Purged Immigration Judges to Speed Up Deportations - The New York Times](#)

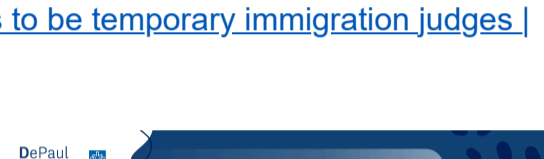
[Fired Immigration Judges Appeal Labor Board Ruling Backing Their Removal | Reuters](#)

[Immigration Court and the Rule of Law | Judge Carla Espinoza | DMC](#)

[Dismantling the Bench: Firings, Fear, and the Future of Immigration Justice](#)

[Pete Hegseth approves 600 military lawyers to be temporary immigration judges | AP News](#)

From Courtrooms to Streetcorners: Reimagining Protection in a New Enforcement Era (MCLE)



This panel explores how innovative practitioners and organizers coordinated action at every level of community life. Panelists will discuss legal interventions, community tools, and hyperlocal organizing models that mobilize neighbors to resist harmful policies. Together, they will map how layered strategies reinforce one another to build durable systems of protection.

Some Relevant Readings

[Castañon Nava v. Department of Homeland Security - ACLU of Illinois](#)

[The Habeas Project | Federal Habeas Litigation for Unlawful Detention](#)

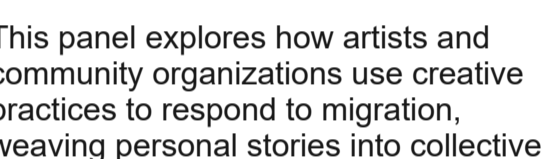
[Hundreds Pack 'Whistlemania' Events To Fight ICE In Chicago: 'We Have To Stand Up For One Another'](#)

[Chicago suburb pays the price for an ICE facility and spotlight it never wanted - Chicago Sun-Times](#)

[Coalition of organizations working to help communities rebuild after Chicago-area immigration raids](#)

['MigraWatch' trainings to 'Whistlemania' events: Chicagoans fight back against ICE raids | Chicago | The Guardian](#)

Collective Creation: Art, Memory, and Belonging



This panel explores how artists and community organizations use creative practices to respond to migration, weaving personal stories into collective acts of advocacy, memory, and belonging. Together, their work shows how art becomes a site of resilience, solidarity, and transformation in the context of immigration.

Some Relevant Readings

[Midwest Immigration Bond Fund](#)

[Local Artist Supporting Immigrant Rights — Midwest Immigration Bond Fund](#)

[Midwest Immigration Bond Fund Expands their Service Area to Minnesota — Midwest Immigration Bond Fund](#)

[Pueblo Unido Gallery](#)

[Dance Peace — Shawn Lent](#)

Books — Alejandra Oliva

Lunch Plenary: Moving the Line While Holding the Line with Jennifer Gordon (MCLE)



Jennifer Gordon, Professor of Law at Fordham University, will examine how immigrant workers are organizing in an era of increasing enforcement. As legal and community advocates work to defend basic rights, workers continue to push for fair treatment and dignity in the workplace.

This session explores how new alliances and strategies are building collective power and advancing worker justice under pressure.

Some Relevant Reading

[The U.S. Forced Labor Import Ban: A Tool for Raising Labor Standards in Supply Chains? by Jennifer Gordon. SSRN](#)

[Immigrant Rights - Arise Chicago](#)

[Understanding ICE Raids at American Workplaces - American Immigration Council](#)

[Immigration raids upending Chicago's construction industry amid worker shortage, higher costs - Chicago Sun-Times](#)

[A Guide for Employers: What to Do if Immigration Comes to Your Workplace - NILC](#)

Ripple Effects: Community Realities and Everyday Acts of Solidarity



This panel explores the far-reaching consequences of heightened immigration enforcement in communities. Panelists will examine how immigration policies reverberate through neighborhoods, influencing social, economic, and emotional well-being, and consider strategies for preserving resilient and inclusive communities.

Some Relevant Readings

[Security, Redefined: Leadership as Protection | CPAA Magazine](#)

[Chicago teachers say immigration enforcement near schools is scaring kids and disrupting class | NBC NEWS](#)

[Immigration Enforcement's Twin Threats to Health Care - CommunityHealth](#)

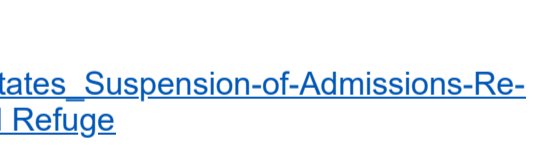
["We Won't Survive If You Don't Support Us" - Chicago Magazine](#)

[Fear of ICE raids devastating Little Village restaurants and small businesses - Little Village Chamber of Commerce](#)

[Chicago's faith leaders on front lines of resistance against ICE crackdown | Chicago | The Guardian](#)

[How ICE raids changed a once bustling Chicago neighbourhood](#)

Resettlement Under Pressure: Defending Expertise, Expanding Pathways, and Sustaining Welcome



As refugee admissions dwindle and communities call for reforming the 1951 Refugee Convention, hear from experts as they break down the growing threats to the traditional refugee resettlement ecosystem and discuss the necessary responses. The panel will also explore emerging alternative pathways for refugees and highlight community-driven initiatives that are expanding welcome across the country.

Some Relevant Readings

[Policies Affecting Refugees in the United States: Suspension of Admissions, Re-Vetting and New Detention Authority - Global Refugee](#)

[TBB: Challenges, Successes, and Recommendations. U.S. Labor Mobility Pathways for Displaced People \(2025\)](#)

[MPI: Engaging Employers in Growing Refugee Labor Pathways \(2024\)](#)

[Rural Welcoming Initiative - Welcoming America](#)

[Welcome US | Policy update: Refugee admissions and the Welcome Corps](#)

[Refugee Arrivals Dashboard - Refugee Council USA](#)

[US has let in 4,499 refugees since October - all but three were South African](#)

Data, Trust and Protection Against Discrimination (MCLE)



This panel examines how personal data is stored and utilized for discriminatory practices, violating non-citizen rights and their trust. Hear from individuals about how to better secure immigrant data from cross-platform sharing, and learn about the policies and legal pursuits to safeguard migrants against misuses of data for immigration enforcement.

Some Relevant Readings

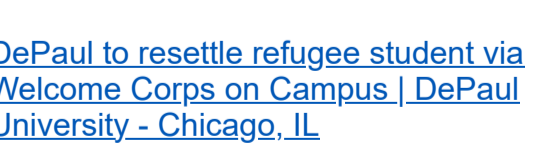
[ICE Uses a Growing Web of AI Services to Power Its Immigration Enforcement and Surveillance - American Immigration Council](#)

[Judge refuses to block IRS from sharing tax data to identify and deport people illegally in U.S. | AP News](#)

[Data Cartels | Sarah Lamdan](#)

Closing Remarks: What Welcome Builds: Migration, Higher Education, and the Communities We Create with GianMario Besana

This closing address, delivered on behalf of DePaul University, situates the university's work with displaced students and migrants within the Vincentian tradition of accompaniment, organized charity, and the inseparability of charity and justice. Drawing on the life and methods of Saint Vincent de Paul the remarks argue that welcoming the forcibly displaced is not a peripheral act of mercy but a constitutive expression of who DePaul is. The address surveys the university's programmatic commitments, from the Displaced Students Initiative and the Higher Education Access Program to the broader work of community integration and mental health support. It grounds the moral case for the hard data of economic research, citing landmark government and independent studies demonstrating that refugees and asylees generate substantial positive fiscal returns across federal, state, and local levels, and that access to higher education dramatically accelerates their contributions to host communities. The remarks conclude with a call to action directed at universities, philanthropic partners, and civic institutions: In a moment of political retrenchment and rising hostility toward migrants, the academy has both the capacity and the responsibility to be a place of refuge, of learning, and of transformation—for the students it serves and for the communities it shapes.



Some Relevant Readings

[Meeting the Moment: How campuses are continuing to support refugees - Presidents' Alliance](#)

[DePaul to resettle refugee student via Welcome Corps on Campus | DePaul University - Chicago, IL](#)

[Resources - Presidents' Alliance](#)

[DePaul is resettling ten Afghan refugees - The DePaulian](#)

[Cultivating Compassion: DePaul Migration Collaborative Video](#)

DePaul Migration Collaborative

ART EXHIBITION

Jonathan Michael Castillo
Visual Artist and Photographer
Fine Arts Program Coordinator and Immigrant Organizer

Jonathan Michael Castillo presents his work that explores migration, identity, and community through photography and visual storytelling. Featuring Immigrant Organizer and Director, the exhibition highlights everyday spaces and experiences that shape immigrant life. Through portraits, environments, and collaborative work, these projects reflect the contributions of immigrant communities and the lived realities of unaccompanied youth, emphasizing dignity, resilience, and belonging.

A 2026 Guggenheim Fellow in Photography, Castillo's work has been exhibited at the Art Institute of Chicago and featured in publications such as The New Yorker and Wired.

Susana Salgado
Youth Program Director, Pueblo Unido Gallery,
Chicago

Pueblo Unido Gallery, part of Centro Romero's programming, is a community-driven art space that centers storytelling, creativity, and advocacy. The youth program led by Susana Salgado supports immigrant youth through mentorship and artistic expression rooted in lived experience.

Through exhibitions and community engagement, the gallery amplifies migrant voices and uses art as a tool to advance human rights, strengthen community, and foster meaningful connections across Chicago.

Broken by Design
MAY 1, 2024 | 8:30 AM CST | SYMPOSIUM 2024 | DEPAUL UNIVERSITY

We look forward to seeing you there!

Contact Us: migration@depaul.edu

Subscribe to DMC Newsletter and be Notified of Events: <https://forms.office.com/r/BL7BcVd9g8>

Unsubscribe: <https://forms.office.com/r/18MDVdGdW>